



Ponte Vedra Concert Hall

1050 A1A North, Ponte Vedra Beach, FL 32082



Managed by the St. Johns County Cultural Events Division, the Ponte Vedra Concert Hall is a performing arts venue located along scenic A1A North in Ponte Vedra Beach, FL. Originally the Cornerstone Church & Community Center, the venue underwent a complete overhaul in 2005 and the state of the art Concert Hall was completed in 2011.

Table of Contents

Venue Contact Information	3
Merchandising	3
Capacities	3
Stage Specifications	4
FOH Information	4
Lighting Information	4
Temporary Stage Power	4
Sound Equipment	5
Backstage Access	6
Loading Dock/Bus Parking	6
Available Equipment	6
Dressing Rooms	7
Venue Curfew	7
Venue Policies	7
Transportation	7
Accomodations	7
Directions	8
Airports	8
Venue Seating Chart	9
Venue Map	10
Lightkey	11

Venue Contact Information

Gabriel Pellicer	<i>General Manager</i>	gpellicer@sjcfl.us
Chris Culpepper	<i>Assistant General Manager</i>	cculpepper@sjcfl.us
Carl Liberatore	<i>Production Manager</i>	cliberatore@sjcfl.us
* Mike Livingston	<i>Production Coordinator</i>	mlivingston@sjcfl.us
Elizabeth Glasgow	<i>Business Manager</i>	eglasgow@sjcfl.us
Katie Root	<i>Marketing Manager</i>	kroot@sjcfl.us
Austin Light	<i>Box Office Manager</i>	alight@sjcfl.us

* MAIN POINT OF CONTACT

Staffing

Security and Stage Hand work at the Ponte Vedra Concert Hall must be provided by approved staffing agencies

Merchandising

Artist Sells	<i>75/25 Split</i>
Venue Sells	<i>70/30 Split</i>
Recorded Materials	<i>90/10 Split</i>

Seating / Standing

Seated Shows	481	INCLUDES ACCESSABILITY
Standing Shows	880	TOTAL





Stage Specification

The stage is a permanent, wooden structure which is accessible from backstage or via portable stairs (2) that may be placed in front of the stage. We offer legs for both stage left and stage right (7' wide each).

Stage

Stage Dimensions	36' wide x 20' deep
Wing Stage Left	8' wide
Wing Stage Right	8' wide
Stage Height	3' tall
Height to Low Beam	16' tall

FOH Mix Position

Location	Floor
Distance to Stage	50'
Cable Run to FOH	125'

Lighting

Console	GrandMA2 on PC - Control Wing and Fader Wing HP Touch Smart 27" All-In-One PC
Fixtures	24 ETC Source Four Par Upstage 24 ETC Source Four Par Midstage 48 ETC Lekos FOH 4 MAC 250 Entour (2 @ Down & up) 4 MAC 250 Wash (4 @ up)

Electrical Power

Stage Right	Amps: 400 / Wires: 5 / Phases: 3 / Connections: Cam locks w/ dual lugs
Stage Left	Amps: 100 / Wires: 5 / Phases: 3 / Connections: Lugs

Sound Equipment

Console	Digi Design SC48(2) FOH and MON
Speakers	Line array - (6) EV XLci @ side Main subwoofer - (2) EV XSUB @ side Front Fill - (4) QSC K8 powered speakers
Amps	(Line Array) Crown XTI – 6000 (Subs) Crown XTI - 6000 (Monitors) Crown XTI - 4000
Processing	EV DX46 LEFT/RIGHT Input Out 1 / Out 2 / Out 3 / Out 3 / Out 4 / Out 5 AES L Hi / L Mid / L Low / R Hi / R Mid / R Low EV DX46 SUB/FRONT FILL Input Out 1 / Out 2 / Out 3 Analog L Sub / R Sub / Front Fill
Direct Boxes	(12) BSS DI (4) Radial Pro1 DI (2) Radial Pro2 Stereo DI
Monitor Speakers	(12) EV T221 M speakers (2) QSC KW152 Side Fill (2) QSC KW181 Side Fill (2) QSC K-Sub Drum sub
Intercom	(6) Clear Com RS-501 belt packs (6) Clear Com CC-95 double muff headsets
Microphones	(8) Shure SM58 (14) Shure SM57 (6) Shure SM81 (1) Shure Beta 91 (4) EV 868 (6) EV 486 (3) AT PRO45 (6) ULX Handheld 6-ULX Lavalier (6) Sennheiser E604 (2) Sennheiser E609 (1) Shure SM52

Backstage Access & Loading Dock

The loading dock is located directly behind the stage and is accessible for one tractor trailer 53' in length. Loading from bus/trailer is convenient; permanent ramp leads right on stage.

Bus Parking & Shore Power

Two (2) 50 amp service is located backstage near the loading dock. Designated Bus parking is clearly marked backstage.



Available Equipment

Approximately 500 "courtside" padded chairs (Black).

Genie AWP25 lift

Sixteen (16) Boom Microphone stands

Ten (10) Straight, Microphone stands

Twelve (12) Short Microphone stands

Tables

Twelve (12) 6 foot folding tables

Three (3) 4 foot folding tables

Eleven (11) 30 inch round high top tables

Twenty (20) 6 foot round tables

Rolling Risers

Two (2) 8' x 8' x 2'

Follow Spot Lights

Two (2) Lycian Club Spot Light 400w

Two (2) Panasonic 6k projectors

HDMI Video rack, Switcher/Scaler

(2) 6 foot dance floor ramps

12 foot semi truck ramp

16' x 16' Dance floor

Public Parking

Parking is available on a first come, first serve basis.

Dressing Rooms

There is a Green room located inside the venue. Two choral style make-up rooms are attached to the green room and have access to two restrooms and one shower. There is also a production office that can be used as a star dressing room if needed.

Internet Access

Wireless internet access is available throughout the venue. There is no security code to access our wireless internet.

Venue Curfew & Policies

A strict 10:30pm curfew applies to all weekend shows (Friday and Saturday nights). Weekday shows (Sunday through Thursday) must finish by 10:00pm. Fines begin accruing at 10:35pm in the amount \$1,500.00 for every 5 minutes over curfew.

Smoking is not allowed backstage or in the dressing rooms. Violations will result in a \$250.00 fine.

All shows are rain or shine events.

Features for those with Disabilities

Accessible seating for those with disabilities is reserved in house. Handicap accessible parking is available on the north side of the venue. Both men's and women's restrooms are also handicap accessible.

Ground Transportation

Transportation Services

A twelve passenger van and driver is available upon request.

Alternative ground transportation can also be accessed through the following links:

<http://www.jia.aero>

<http://www.orlandoairports.net/main.htm>

Accommodations

Local hotel discounts available. Contact Mike Livingston at mlivingston@sjcfl.us for more details.

Please visit Getaway4Florida for local accommodations:

<http://www.floridashistoriccoast.com/accommodations/>

Directions

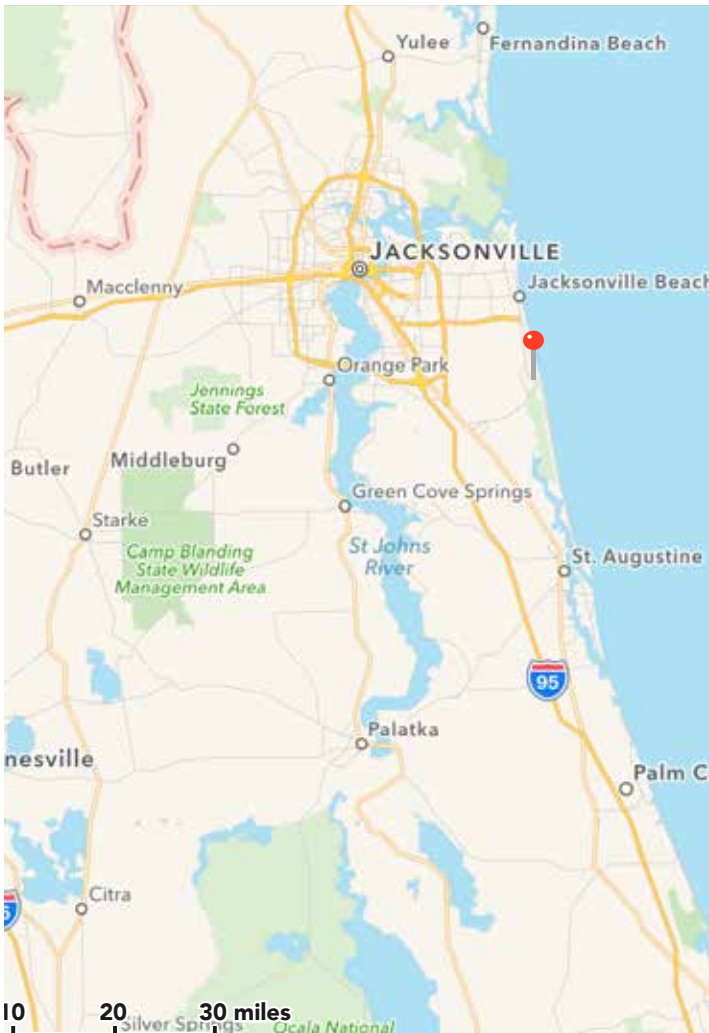
The Ponte Vedra Concert Hall is located in Ponte Vedra, Florida about 5 miles south of Jacksonville beach. The main entrance, including box office and will call, is located at: 1050 A1A North, Ponte Vedra Beach, FL 32082
GPS 30° 10.041'N 81° 22.185'W

Traveling North:

Take I-95 North to CR-210 exit, EXIT 329, toward PONTE VEDRA BCH/GREEN COVE SPGS. Turn RIGHT onto CR-210 E/CR-210 W. Continue to follow CR-210 E. Turn LEFT onto US-1 N. Take the 1st RIGHT onto VALLEY RIDGE BLVD/CR-210 E. Continue to follow CR-210 E. Enter next roundabout and take the 1st exit onto MICKLER RD. Turn SHARP LEFT onto SR-A1A N/SR-A1A. Continue to follow SR-A1A N and the Ponte Vedra Concert Hall will be on the right.

Traveling South:

Take I-95 South to SR-202 E/BUTLER BLVD/J TURNER BUTLER BLVD toward JAX BEACHES.; Merge onto SR-A1A S toward PONTE VEDRA/ST AUGUSTINE. Drive approximately 4.4 miles and the venue will be on the right side.



Airports

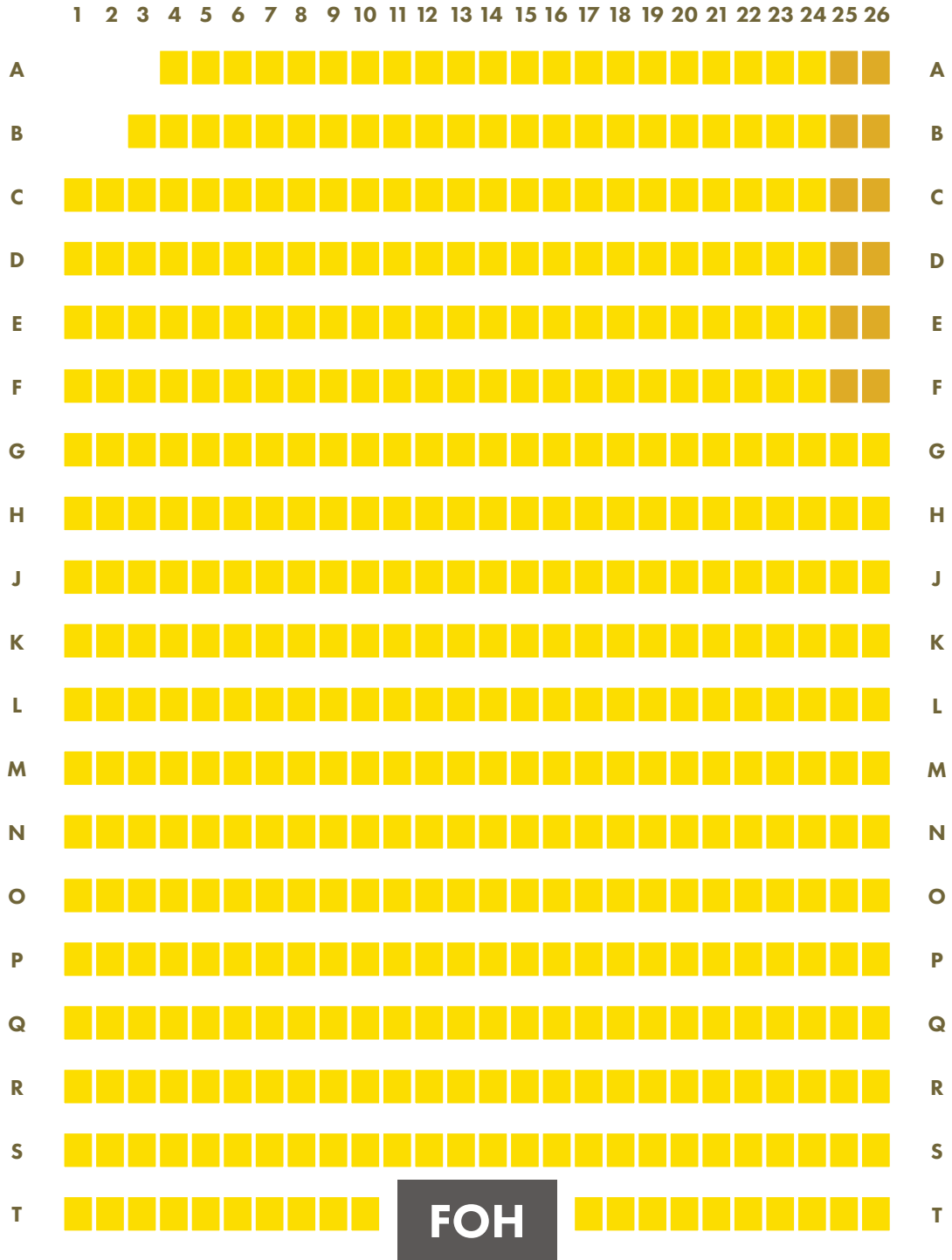
Jacksonville (JAX):

Located 37 miles from the venue, Jacksonville International Airport remains a little under an hour away. For questions concerning flights, scheduling, or other information please feel free to visit their website: www.jia.aero or call (904)741-2000.

Orlando (MCO):

Located 143 miles from the venue, Orlando International Airport is about a 3 hour drive. For questions concerning flights, scheduling, or other information please feel free to call (407)825-2001 or visit their website: www.orlandoairports.net

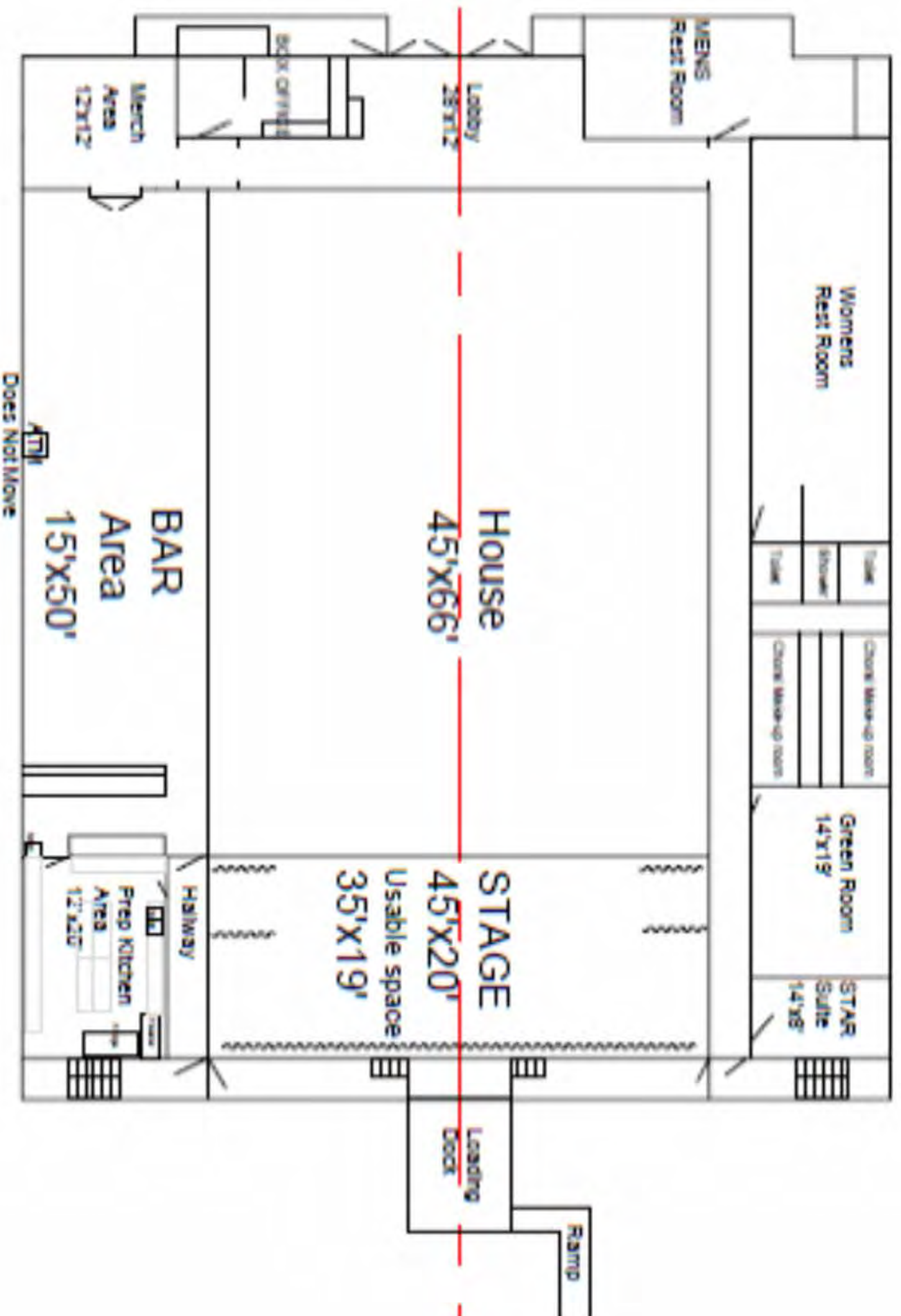
STAGE

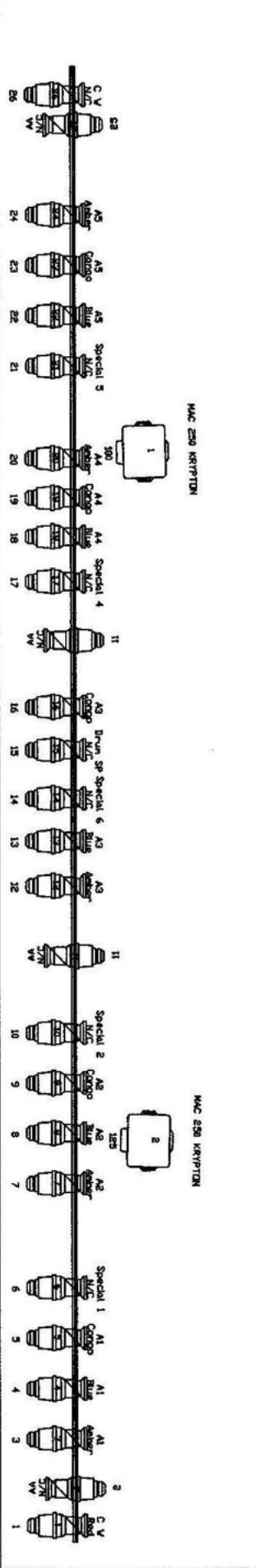
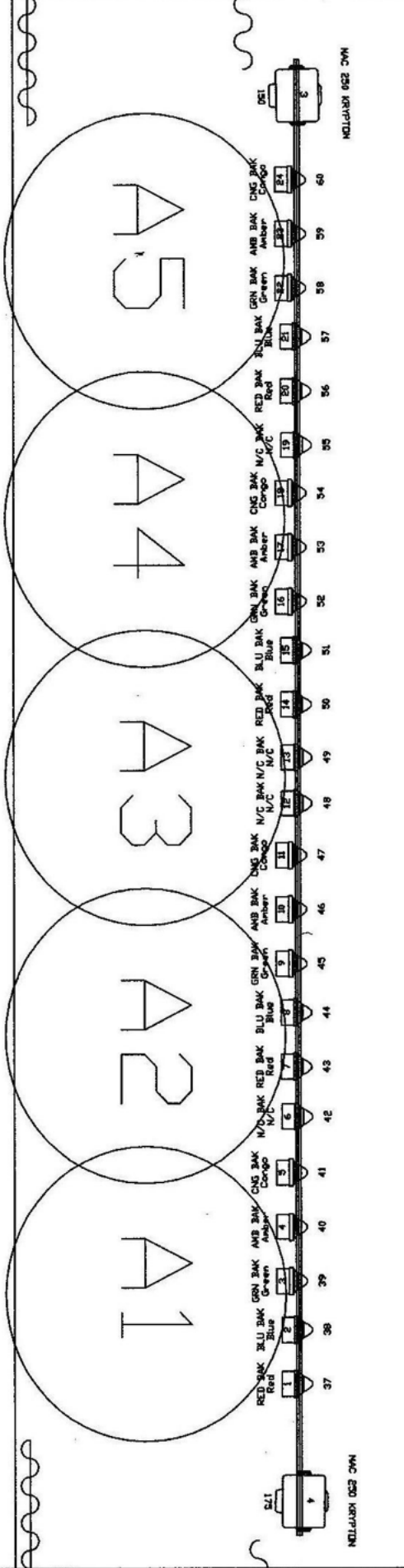
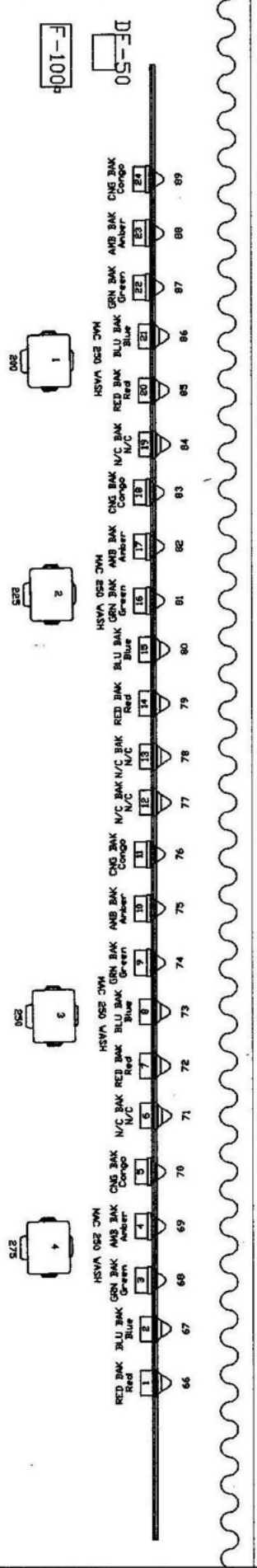


■ Open Seat
■ Handicap Seat

FOH

1050 A1A North
Ponte Vedra Beach, FL 32082
www.pvconcerthall.com





Lighting Key

MAC 250 WASH	MAC 250 KRYPTON	AA	CHG BAK	DF-50	F-100
1	1	25	99		
MAC 250 (V.51)	MAC 250 (KRYPTON)	S-4 26	S-4 PAR	DF-50	F-100
1	1	26	99		

-Spot (2) Lucian Super Arc
400
-ETC Element Lighting Controller
-100amp company switch Up
Right

Venue:
Ponte Vedra Concert Hall

SCALE: 1/4"=1'
REV: 08-01-2011
DATE:
Drawn By: Mike Livingston IATSE#115
MikeLivingston84@hotmail.com 904-881-7501